

Our consultants are our most important resource

All are highly trained and experienced pest controllers.
In addition all are:

- British Pest Control Association Certificated Field Biologists
- Advanced Food Hygiene Certificated
- Holders of the Safety Passport Alliance, Food and Drink Safety Passport

To ensure that they are always up-to-date with the latest technical developments, they are all members of **BASIS PROMPT**, the pest control industry's independently accredited scheme for Continuing Professional Development.



'Whitworth Bros Ltd operates a self-managed pest control system, with independent verification and technical support provided by Acheta. This partnership allows us to raise quality standards above those that are attainable when a pest control company is used.'

Operations Manager, Whitworth Bros Ltd

Client List

Below is a list of companies that have utilised Acheta's services.

3663 First for Foodservice
Cadbury Trebor Bassett
Cargill
Cereal Partners UK
Danone Water UK
L. Batley Pet Products
Northern Foods
Tate & Lyle Europe
Tesco
The Eden Project
Whitworth Bros Ltd



Acheta Consulting Ltd

Threave House
Long Street
Belton
Loughborough
Leics
LE12 9TP
Tel: +44 (0)1530 224942
Fax: +44 (0)1530 224942
Email: john.simmons@acheta.co.uk
www.acheta.co.uk

Company Registered in England. No. 4635772



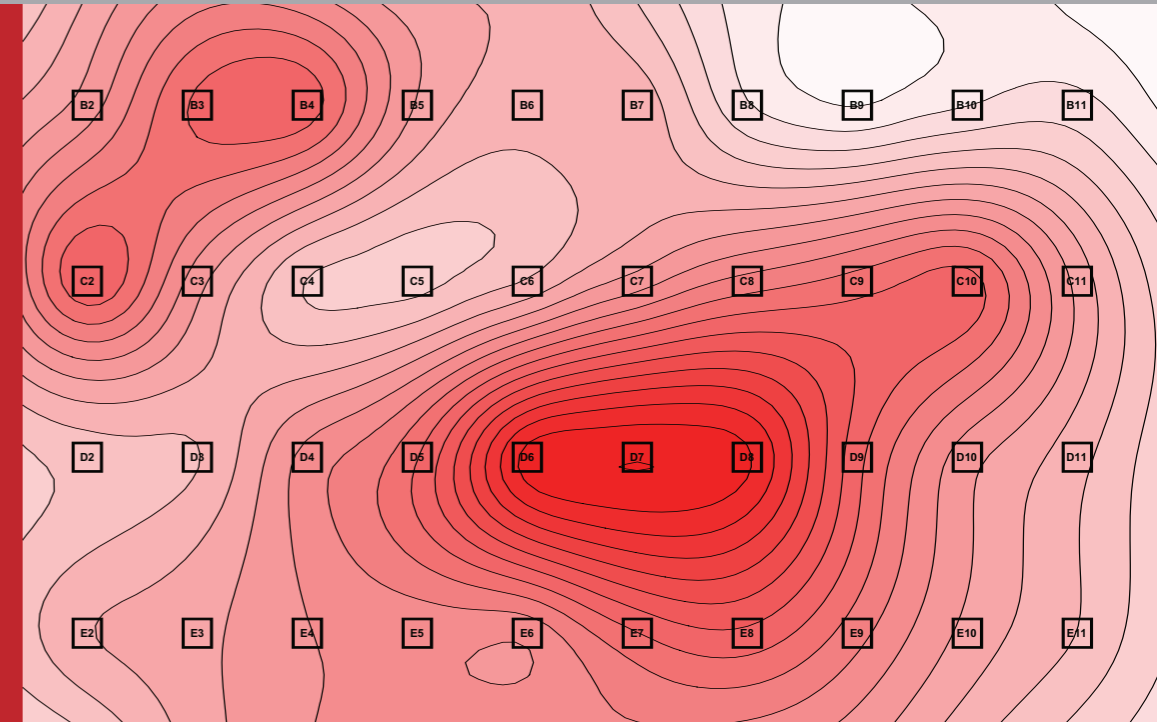
Independent inspection, training and consultancy services for pest control

Acheta - supporting food, pharmaceutical and allied industries throughout Europe

Due Diligence: Does your pest control contract deliver?

Technical inspections provided by pest control contractors should provide a comprehensive appraisal of the site. They should also include a quality assurance check of the standard of the pest control work. However, in practice, as contractors are unlikely to provide a report that may be critical of their own work, the QA element of the service is not disclosed. Furthermore, some inspection reports are of dubious technical quality, being little more than sales proposals.

Acheta is a consultancy operating independently of commercial pest control concerns. We provide truly independent pest control consultancy services to our clients.



Cockroach distribution on cooker floor

Inspection and Audit Services

Acheta inspections can be provided as straight replacements for inspections currently provided by your pest control contractor, or on an ad hoc, perhaps trouble-shooting, basis.

They exceed the standards of all certification and accreditation bodies, and offer the following benefits:

- Improved performance from your pest control contractor.
- Cost savings, through the provision of unbiased advice.
- Access to an expert who is familiar with your site.
- Improved due diligence protection.

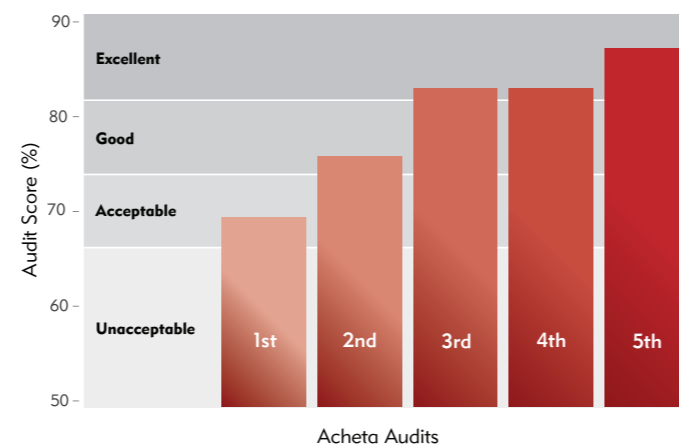
Reports are sub-divided into four sections:

- Review of recent pest issues and of contractor attendance and paperwork.
- Inspection observations and recommendations, prioritised on the threat to product safety.
- Summary of current infestation status, and review of potential alternative strategies.
- Quantitative QA assessment of pest contractor performance.

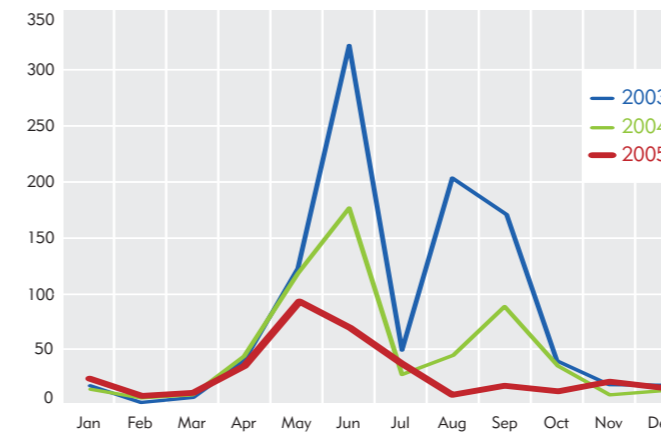
Our scoring systems are unique, and allow measurement of both contractor and site performance.

We don't just say we can improve the performance of your pest controller - we have statistics that prove it.

Pest Control Quality Assurance Audit Scores



Total Moth Catch in Process Area



Trend and Data Analysis

Much useful information is gathered in pest monitoring programmes. Too often though the contractor makes little or no use of it. We have many years experience in analysing and interpreting data, and can use it to benefit our clients. Graphs and contour maps bring data to life.

Training

Tailored to the needs of individual clients, we can deliver training in all aspects of pest control. Common subjects include:

- Pest control contract management
- Pest awareness
- Stored product insect pests
- Safe use of insecticides
- Pest control practices in organic food sites

Innovation in pest control has resulted from Tate & Lyle, Acheta and our pest control contractor working together, with new products, monitoring techniques and analytical tools significantly advancing standards on site.'



Quality Manager, Tate & Lyle Europe